



# MONTHLY MEMBERSHIP PROGRESS REPORT

District 18 L

Results as of: 7/31/2016

GMT: HARVEY WHITLEY

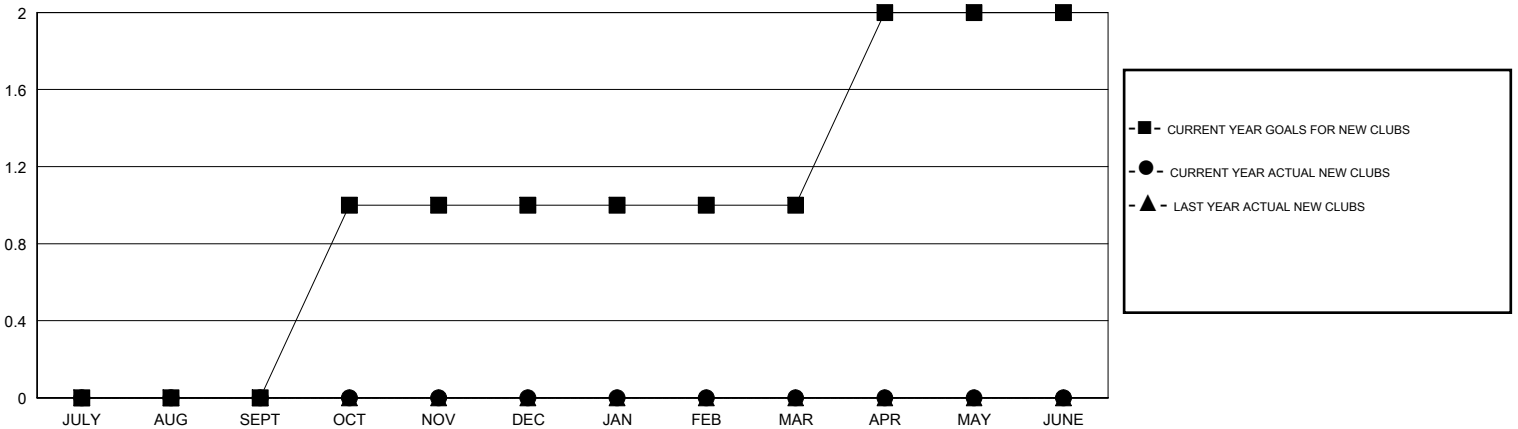
LOCATION GEORGIA

GMT CA 1

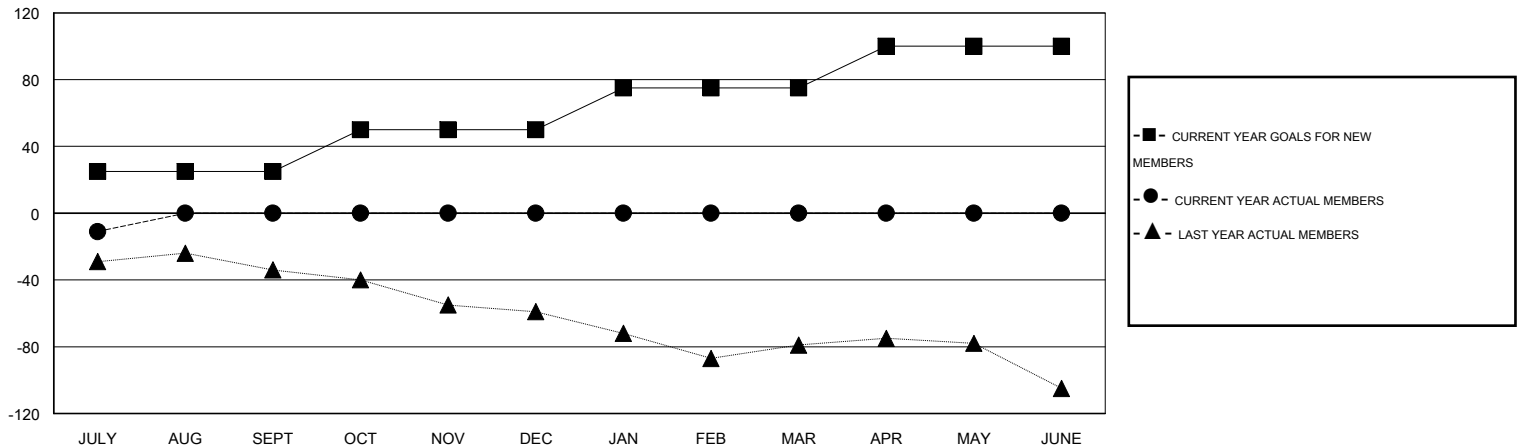
Clubs				
RESULTS FOR 2016-2017				
QUARTER	NEW CLUB GOAL	NEW CLUBS	DROPPED CLUBS	NET GAIN/LOSS
JULY/AUG/SEPT	0	0	0	0
OCT/NOV/DEC	1	0	0	0
JAN/FEB/MAR	0	0	0	0
APR/MAY/JUNE	1	0	0	0

Members				
RESULTS FOR 2016-2017				
QUARTER	NEW MEMBER GOAL	CHARTER AND NEW MEMBERS ADDED	DROPPED MEMBERS	NET GAIN/LOSS
JULY/AUG/SEPT	25	11	22	-11
OCT/NOV/DEC	25	0	0	0
JAN/FEB/MAR	25	0	0	0
APR/MAY/JUNE	25	0	0	0

GOALS AND ACTUAL NEW CLUBS CUMULATIVE



GOALS AND ACTUAL MEMBERS CUMULATIVE



DROPPED CLUBS: 0
------------------

7 CLUBS OF 48 ADDED 1 OR MORE NEW MEMBERS

GENDER DISTRIBUTION	
MALE	887 (65.22%)
FEMALE	473 (34.78%)

DROPPED MEMBERS	
DECEASED	2
CLUB CANCELLED	0
OTHER	20
<b>TOTAL</b>	<b>22</b>

[CLICK HERE FOR HEALTH ASSESSMENT DATA](#)

FAMILY UNIT MEMBERS	240
HEAD OF HOUSEHOLD	116
NON-HEAD OF HOUSEHOLD	124